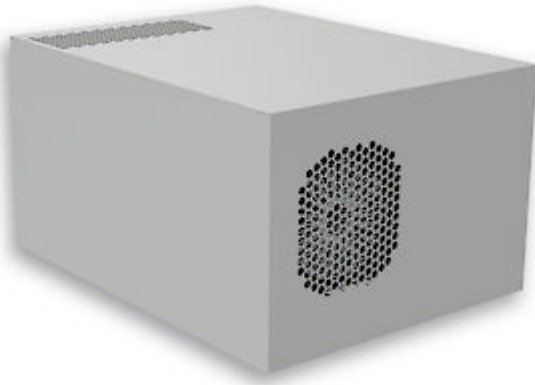


Roof mounted cooling unit



Description

Order Number:	44820001
Brand Name:	SLIMLINE TOP
Colour:	RAL 7035
Housing Material:	Mild steel, powder coated
Ingress Protection:	IP 54
Approvals:	CE, cURus

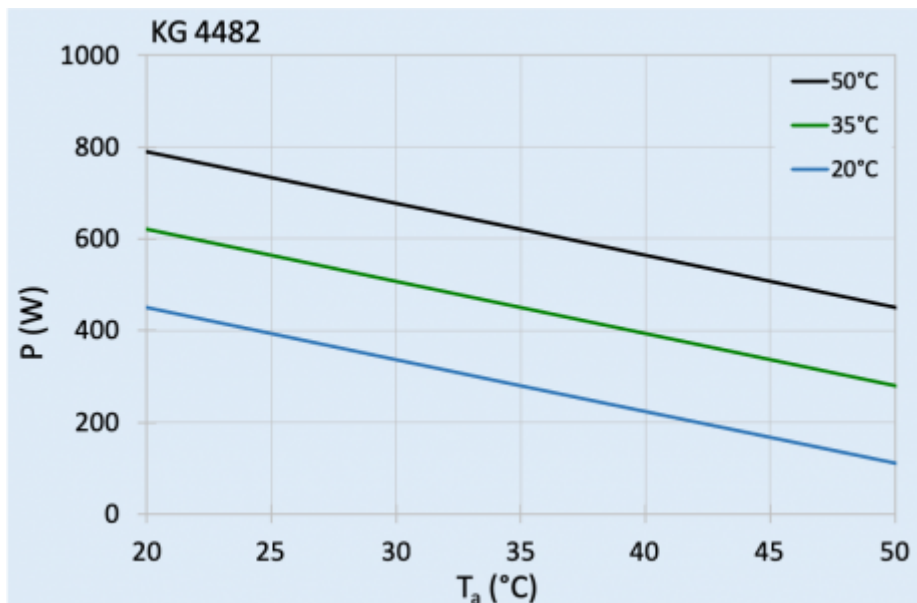
Technical Data

Cooling capacity L35L35 (EN14511-3):	450 W @ 50 Hz 460 W @ 60 Hz
Cooling capacity L35L50 (EN14511-3):	280 W
Compressor type:	Rotary piston compressor
Refrigerant / GWP:	R 134a / 1430
Refrigerant charge:	152 g / 5.4 oz
High / low Pressure:	35 / 6 bar 508 / 88 psig
Operating Temperature Range:	10°C - 50°C
Air flow volume (system / unimpeded):	Ambient air circuit: 250 / 650 m ³ /h Cabinet air circuit: 140 / 250 m ³ /h
Mounting:	Roof mounted
Dimensions A x B x C (D+E):	230 x 330 x 430 mm
Weight:	23 kg
Cut out dimensions:	142 x 98 mm / 142 x 147.5 mm
Voltage / Frequency:	230 V ~ 50/60 Hz
UL Voltage / Frequency:	230 V ~ 50/60 Hz
Current L35L35:	2.3 A
Starting current:	6.8 A
Max. current:	2.8 A
Nominal power L35L35:	475 W @ 50 Hz 530 W @ 60 Hz
Max. power:	630 W
Fuse:	6 A (T)
Short-circuit current rating:	5 kA
Connection:	Connection terminal block

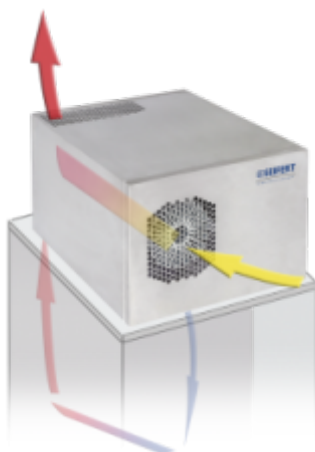
Please click on the graphics to download.

More CAD drawings can be found under [Product Download](#).

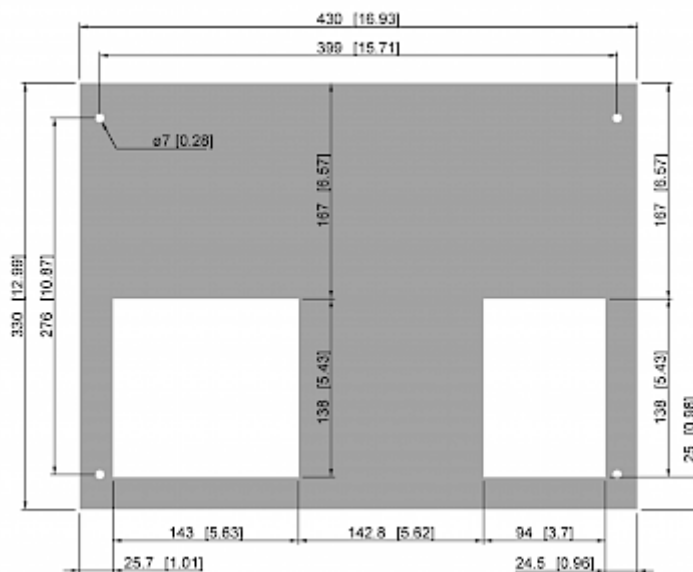
> [Overview Product Group SLIMLINE PRO TOP - roof mounted cooling units](#)

Performance graph:


click image to enlarge

Air flow:


click image to enlarge

Cut Out Dimension:


click image to enlarge

Order Information

Stainless steel housing part no.	4482002
Taric code	84158200
GTIN (EAN)	5350604330009