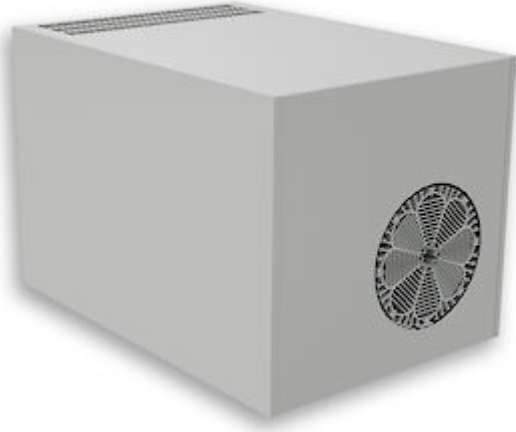


Roof mounted cooling unit



Description

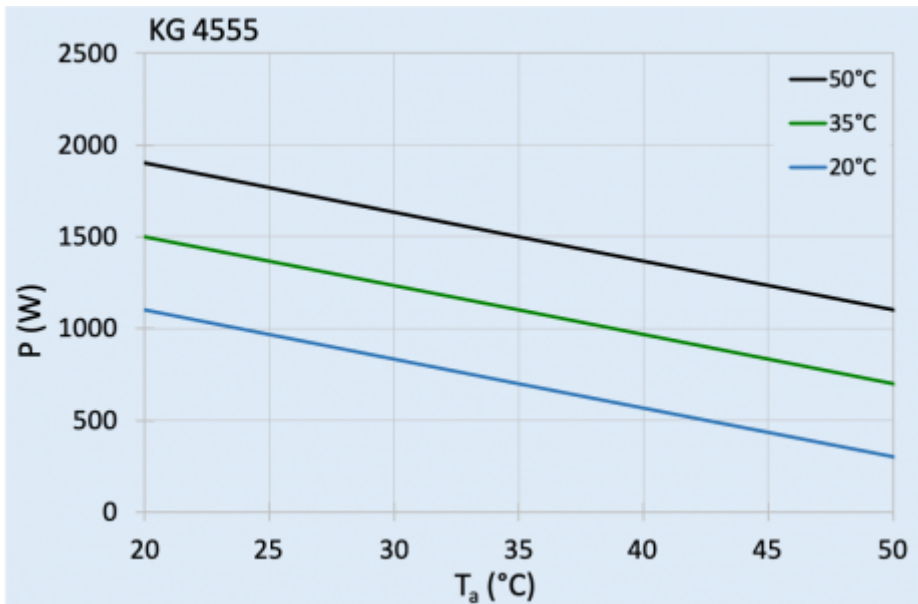
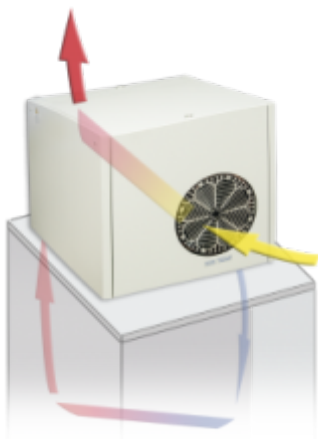
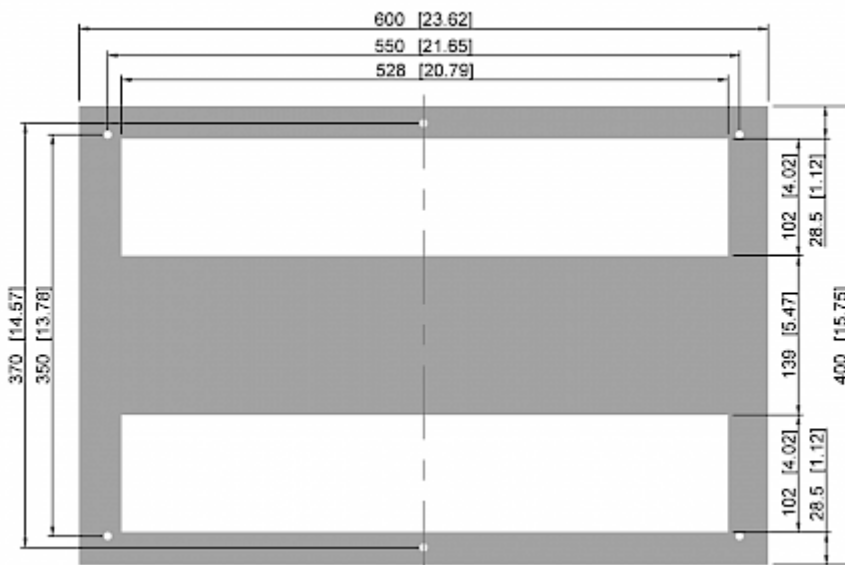
Order Number:	45550001
Brand Name:	SLIMLINE TOP
Colour:	RAL 7035
Housing Material:	Mild steel, powder coated
Ingress Protection:	IP 54
Approvals:	CE, cURus

Technical Data

Cooling capacity L35L35 (EN14511-3):	1.10 kW @ 50 Hz 1.15 kW @ 60 Hz
Cooling capacity L35L50 (EN14511-3):	700 W @ 50 Hz 750 W @ 60 Hz
Compressor type:	Rotary piston compressor
Refrigerant / GWP:	R 134a / 1430
Refrigerant charge:	500 g / 17.6 oz
High / low Pressure:	35 / 6 bar 508 / 88 psig
Operating Temperature Range:	10°C - 55°C
Air flow volume (system / unimpeded):	Ambient air circuit: 360 / 1200 m ³ /h Cabinet air circuit: 500 / 650 m ³ /h
Mounting:	Roof mounted
Dimensions A x B x C (D+E):	400 x 400 x 600 mm
Weight:	55 kg
Cut out dimensions:	108 x 530 mm (x2)
Voltage / Frequency:	230 V ~ 50/60 Hz
UL Voltage / Frequency:	230/240V ~ 50/60Hz
Current L35L35:	4.0 A @ 50 Hz 4.4 A @ 60 Hz
Starting current:	15 A
Max. current:	4.8 A
Nominal power L35L35:	800 W @ 50 Hz 900 W @ 60 Hz
Max. power:	1.09 kW
Fuse:	10 A (T)
Short-circuit current rating:	5 kA
Connection:	Connection terminal block

Please click on the graphics to download.
More CAD drawings can be found under [Product Download](#).

> [Overview Product Group SLIMLINE PRO TOP - roof mounted cooling units](#)

Performance graph:

[click image to enlarge](#)
Air flow:

[click image to enlarge](#)
Cut Out Dimension:

[click image to enlarge](#)

Order Information

Stainless steel housing part no.	4555002
Taric code	84158200
GTIN (EAN)	5350604330085