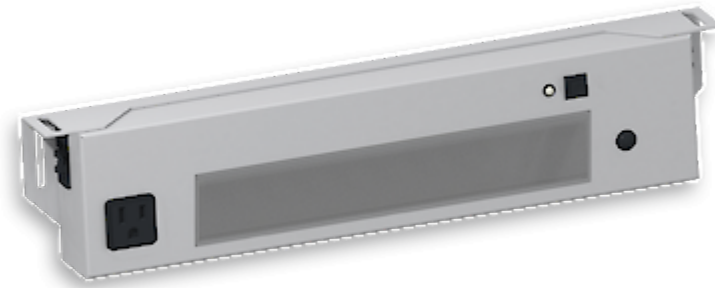


Sensor operated LED lamp. Only for installation inside industrial control cabinets.



Description

Order Number:	490513612
Colour:	RAL 9003
Housing Material:	Mild steel, powder coated
IP protection class to EN 60 529:	IP 20
Included:	Motion sensor NEMA 5-15 outlet (max. 10.6 A) Daisy Chain
SK notes:	Suitable for damp locations
Approvals:	CE, cURus
UL File Number:	E358386

Accessories:

 Power cable AC black, 0.7 m

 Power cable AC orange, 0.7 m

 Power cable AC black, 3 m

 Power cable AC orange, 3 m

 Daisy Chain cable AC black, 0.7 m

 Daisy Chain cable AC orange, 0.7 m

 Daisy Chain cable AC black, 1.2 m

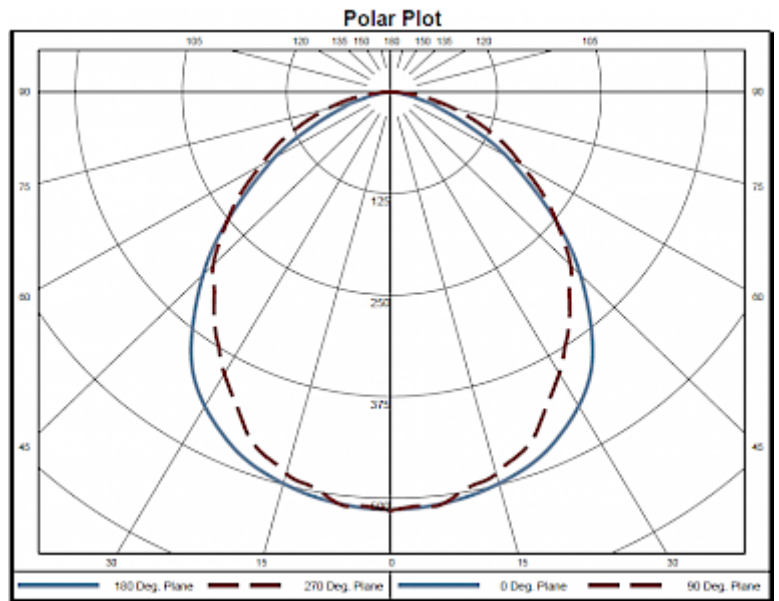
 Daisy Chain cable AC orange, 1.2 m

Technical Data

Operating Temperature Range:	-30°C - 50°C
Mounting:	M5 screws (x2)
Dimensions A x B x C (D+E):	420 x 90 x 45 mm
Weight:	2 kg
Voltage / Frequency:	115 V ~ 50/60 Hz
Rated current:	10.6 A
Power consumption:	16 W
Lamp:	EB-7801
Luminosity:	1500 lm / 5100 K
Lifetime:	60,000 hrs. @ 20°C
Connection:	Connector

Please click on the graphics to download.
More CAD drawings can be found under [Product Download](#).
> [Overview Product Group STRIPLITE - LED Enclosure Lights](#)

Performance graph:



[click image to enlarge](#)

Order Information

Taric code

94054990
