

Cabinet cooling unit



Description

Order Number: 850610001

Brand Name: SLIMLINE PRO

Colour: RAL 7035

Housing Material: Mild steel, powder coated

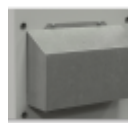
Ingress Protection: IP 55 / Type 12

Approvals: CE, cURus, cULus

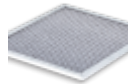
Accessories:



[Gasket Kit Type 4](#)



[Cold Air Outlet Duct 8503/06](#)



[Washable Aluminium Filter 8503/06](#)

Technical Data

Cooling capacity L35L35 (EN14511-3):	670 W @ 50 Hz 680 W @ 60 Hz
Cooling capacity L35L50 (EN14511-3):	510 W @ 50 Hz 535 W @ 60 Hz
EER L35L35:	1.55
Compressor type:	Rotary piston
Refrigerant / GWP:	R134a / 1430
Refrigerant charge:	125 g / 4.4 oz
High / low Pressure:	28 / 6 bar 406 / 88 psi
Operating Temperature Range:	10°C - 60°C
UL temperature range:	10°C - 55°C
Air flow volume (system / unimpeded):	Ambient air circuit: 200 / 408 m ³ /h Cabinet air circuit: 122 / 180 m ³ /h
Mounting:	Wall mounted / recessed
Dimensions A x B x C (D+E):	600 x 250 x 135 (45+90) mm
Weight:	14 kg
Voltage / Frequency:	120 V ~ 50/60 Hz
UL Voltage / Frequency:	120 V ~ 60 Hz
Current L35L35:	5.6 A @ 50 Hz 4.1 A @ 60 Hz
Starting current:	13 A
Max. current:	6.0 A
Nominal power L35L35:	515 W @ 50 Hz 455 W @ 60 Hz
Max. power:	620 W
Fuse:	15 A (T)
Max circuit ampacity:	15 A
Short-circuit current rating:	5 kA
Rated current compressor:	3.7 A

Full load current fans:

0.4 A

Connection:

4 pole terminal block for power

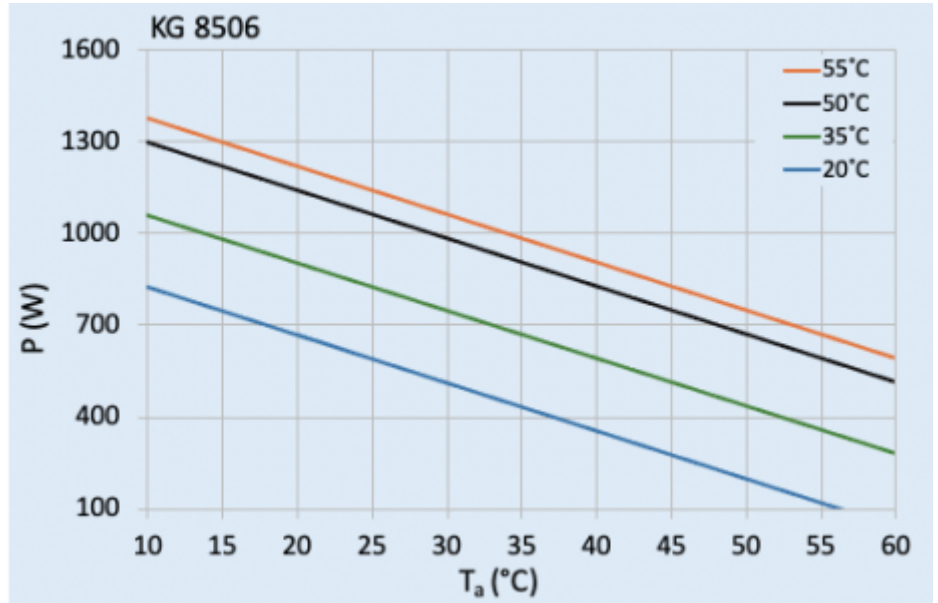
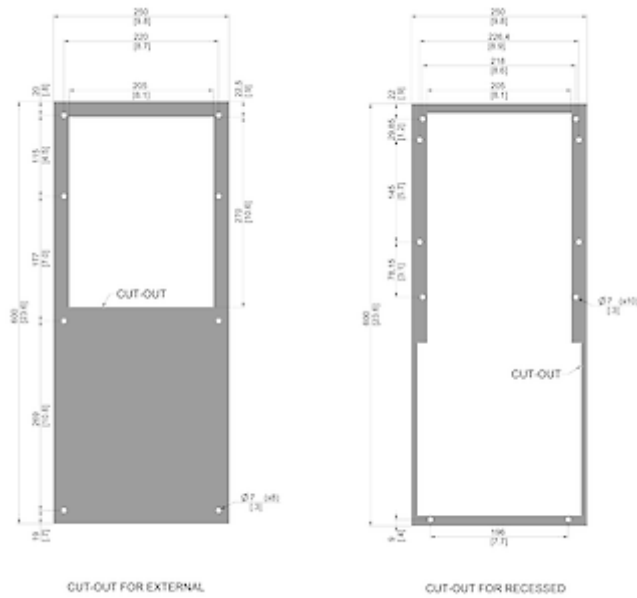
5 pole terminal block for signals

3 pole terminal block for RS 485

Please click on the graphics to download.

More CAD drawings can be found under [Product Download](#).

> [Overview Product Group SLIMLINE PRO - cooling units in a new design](#)

Performance graph:

[click image to enlarge](#)
Cut Out Dimension:

[click image to enlarge](#)

Order Information

Box dimensions	692 x 285 x 192 mm
Gross weight	16 Kg
Taric code	84158200