

## Cabinet cooling unit



## Description

**Order Number:** 850620001

**Brand Name:** SLIMLINE PRO

**Colour:** RAL 7035

**Housing Material:** Mild steel, powder coated

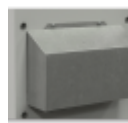
**Ingress Protection:** IP 55 / Type 12

**Approvals:** CE, cURus, cULus

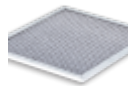
**Accessories:**



[Gasket Kit Type 4](#)



[Cold Air Outlet Duct 8503/06](#)



[Washable Aluminium Filter 8503/06](#)

## Technical Data

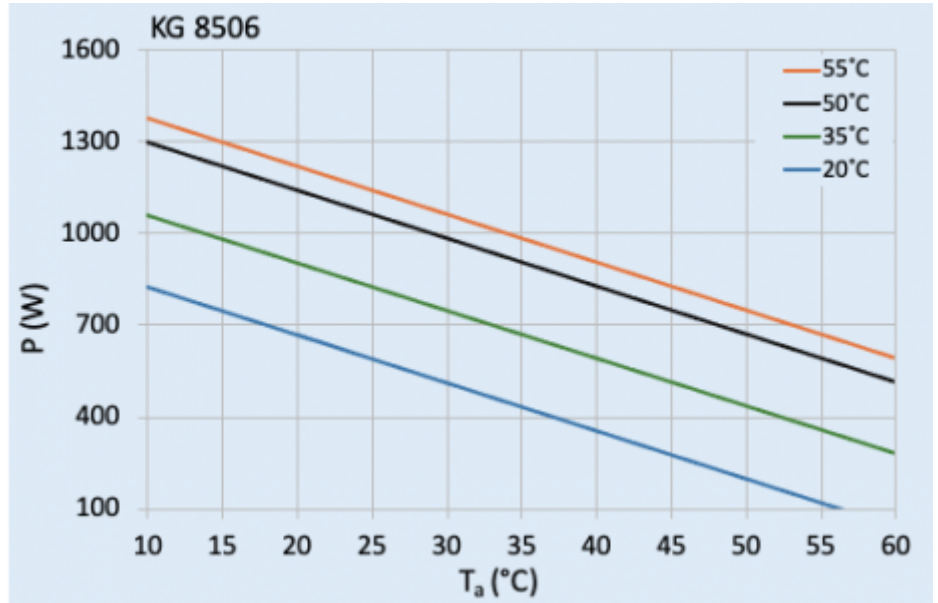
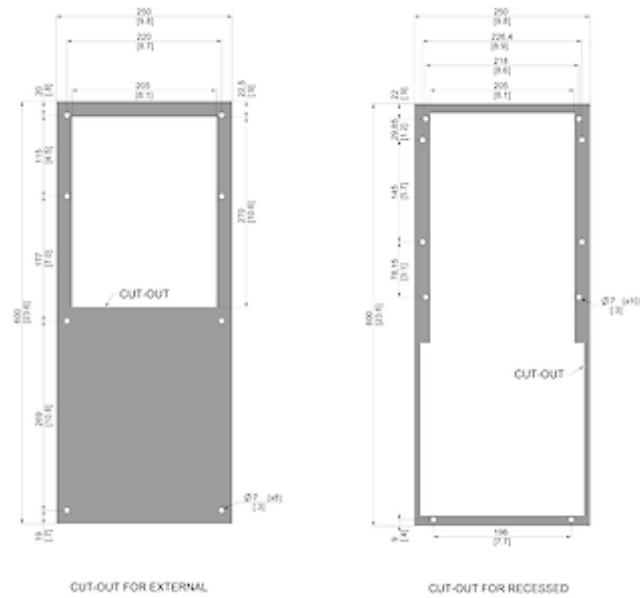
<b>Cooling capacity L35L35 (EN14511-3):</b>	700 W @ 50 Hz 750 W @ 60 Hz
<b>Cooling capacity L35L50 (EN14511-3):</b>	620 W @ 50 Hz 655 W @ 60 Hz
<b>EER L35L35:</b>	1.55
<b>Compressor type:</b>	Rotary piston
<b>Refrigerant / GWP:</b>	R134a / 1430
<b>Refrigerant charge:</b>	146 g / 5.15 oz
<b>High / low Pressure:</b>	28 / 6 bar 406 / 88 psi
<b>Operating Temperature Range:</b>	10°C - 60°C
<b>UL temperature range:</b>	10°C - 55°C
<b>Air flow volume (system / unimpeded):</b>	Ambient air circuit: 225 / 408 m <sup>3</sup> /h Cabinet air circuit: 122 / 180 m <sup>3</sup> /h
<b>Mounting:</b>	Wall mounted / recessed
<b>Dimensions A x B x C (D+E):</b>	600 x 250 x 187.6 (48.6+139) mm
<b>Weight:</b>	16 kg
<b>Voltage / Frequency:</b>	400V/460 V - 50/60 Hz 2~
<b>UL Voltage / Frequency:</b>	460 V / 60Hz 2~
<b>Current L35L35:</b>	1.1 A @ 50Hz 0.9 A @ 60 Hz
<b>Starting current:</b>	3.0 A
<b>Max. current:</b>	1.3 A
<b>Nominal power L35L35:</b>	410 W @ 50 Hz 415 W @ 60 Hz
<b>Max. power:</b>	585 W
<b>Fuse:</b>	15 A (T)
<b>Max circuit ampacity:</b>	15 A
<b>Short-circuit current rating:</b>	5 kA
<b>Rated current compressor:</b>	1 A

<b>Full load current fans:</b>	0.15 A
<b>Connection:</b>	4 pole terminal block for power 5 pole terminal block for signals 3 pole terminal block for RS 485

Please click on the graphics to download.

More CAD drawings can be found under [Product Download](#).

> [Overview Product Group SLIMLINE PRO - cooling units in a new design](#)

**Performance graph:**

[click image to enlarge](#)
**Cut Out Dimension:**

[click image to enlarge](#)

## Order Information

<b>Box dimensions</b>	692 x 285 x 242 mm
<b>Gross weight</b>	17 Kg
<b>Taric code</b>	84158200