

Enclosure cooling units

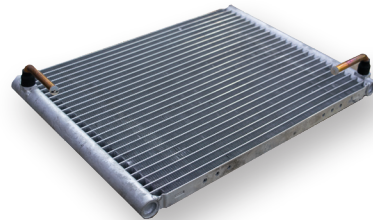
SlimLine Pro



- Modern industrial design
- Simplified installation
- Up to 50% less refrigerant
- Operating temperature range from +10°C to +60°C
- High protection class IP 55 / IP56
- NEMA / Type 4X with stainless steel housing
- Identical cutout for multiple cooling capacities
- Wall mounted or recessed
- 100% recyclable packaging

Condenser

The micro channel condenser allows a significant reduction in the amount of refrigerant used (> 50%). The result: high efficiency and environmental protection.



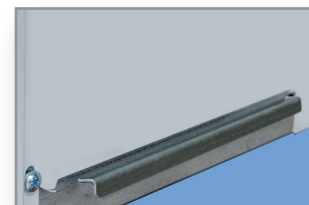
Condensate management

Standard feature: corrosion resistant electric condensate evaporator in stainless steel (V2A)



Bracket for wall mounting

Easy and quick installation thanks to the new mounting bracket. Once hooked into the enclosure cutout from the front using a handling crane, the cooling unit can easily be mounted to the enclosure by a single person.



Bracket for recessed mounting

After the front cover has been removed, the cooling unit can be hung using a handling crane into the enclosure cutout from inside, and be easily mounted to the enclosure.

SlimLine Pro packaging



The 100% recyclable packaging of the SlimLine Pro units does not contain any plastic and is another contribution towards environmental protection.

The unit can be unpacked in no time. The tray above the cooling unit contains the necessary installation material and a short summary of the user manual. The full version can be downloaded using the QR code on the type plate.



Lifting sling

The innovative pre-installed lifting sling saves you from having to screw on the traditional eye bolts. After the outer box has been removed from both sides, the cooling unit can be hung directly into the enclosure cutout for installation.

Modell	Cooling capacity L35L35	Dimension
KG 8503	350 W @ 50 Hz	600 x 250 x 135 mm
KG 8505	550 W @ 50 Hz	370 x 520 x 155 mm
KG 8506	670 W @ 50 Hz	600 x 250 x 135 mm
KG 8508 *)	825 W @ 50 Hz	950 x 305 x 210 mm
KG 8512 *)	1.2 kW @ 50 Hz	950 x 305 x 210 mm
KG 8412 *)	1.5 kW @ 50 Hz	950 x 395 x 250 mm
KG 8515	1.5 kW @ 50 Hz	1,350 x 395 x 210 mm
KG 8520	2.0 kW @ 50 Hz	1,350 x 395 x 210 mm
KG 8525	2.5 kW @ 50 Hz	1,350 x 395 x 210 mm
KG 8540	4.0 kW @ 50 Hz	1,550 x 455 x 270 mm
KG 8562	6.0 kW @ 50 Hz	1,630 x 455 x 270 mm

*) same enclosure cutout

Seifert Systems GmbH

Albert-Einstein-Str. 3
42477 Radevormwald
Germany
Tel. +49 2195 68994-0
Fax +49 2195 68994-20
info.de@seifertsystems.com

Seifert Systems Ltd.

HF 09/10 Hal Far Ind. Est.
Birzebbuga BBG 3000
Malta
Tel. +356 2220 7000
Fax +356 2165 2009
info@seifertsystems.com

Seifert Systems AG

Wilerstraße 16
4563 Gerlafingen
Switzerland
Tel. +41 32 675 35 51
Fax +41 32 675 44 76
info.ch@seifertsystems.com

Seifert Systems Italy

Rep. Office
26100 Cremona
Italy
Tel. +39 349 2594524
Fax +356 2165 2009
Nevio.Lombardi@seifertsystems.com

Seifert Systems Inc.

75 Circuit Drive
North Kingstown RI 02852
United States
Tel. +1 401-294-6960
Fax +1 401-294-6963
info.us@seifertsystems.com

Seifert Systems Pty Ltd.

105 Lewis Road
Wantima South 3152 Victoria
Australia
Tel. +61 3 98 01 19 06
Fax +61 3 98 87 08 45
info@seifertsystems.com.au